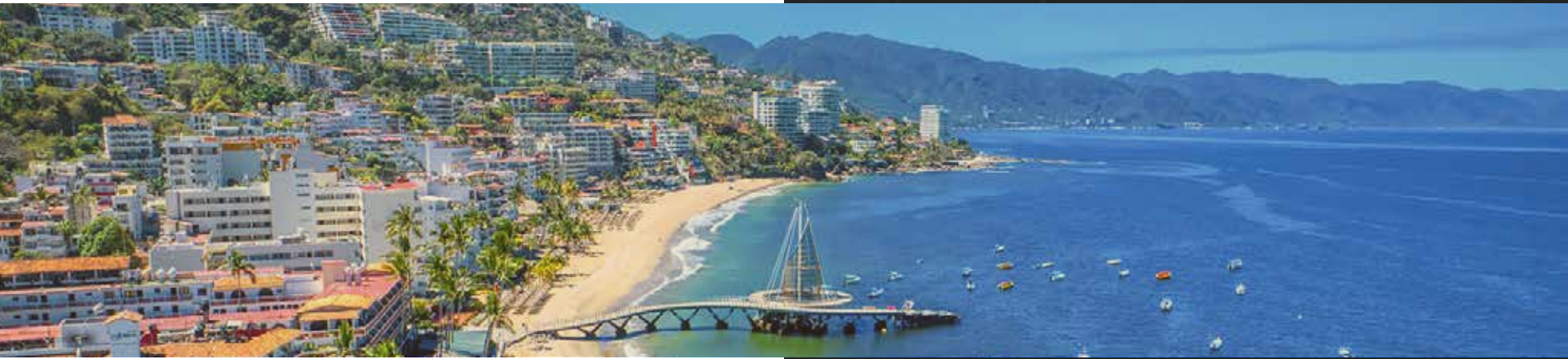


WELCOME
TO PUERTO VALLARTA

ROMANTIKA
LUXURY CONDOMINIUMS



ROMANTIKA
LUXURY CONDOMINIUMS



Francisca Rodriguez 333, Col. Emiliano Zapata, Puerto Vallarta, Jalisco, México, 48380

YOUR NEW HOME
in the heart of the Romantic Zone

LUXURY CONDOMINIUMS



Located in one of the most iconic areas of PUERTO VALLARTA; THE HEART OF THE ROMANTIC ZONE, specifically at the Vallarta-Mismaloya highway exit.

Francisca Rodriguez 333, Col. Emiliano Zapata, Puerto Vallarta, Jalisco, México, 48380

Todas las representaciones artísticas, bocetos, materiales gráficos, planos, especificaciones, características, dimensiones, amenidades, vistas existentes o futuras, y fotos representadas o descritas de alguna otra manera aquí son únicamente propuestas y conceptuales. Están basadas en planes preliminares de desarrollo, los cuales están sujetos a retiro, revisiones y otros cambios sin previo aviso.

All artist renderings, sketches, graphic materials, plans, specifications, features, dimensions, amenities, existing or future views, and photos depicted or otherwise described herein are proposed and conceptual only. They are based upon preliminary development plans, which are subject to withdrawal, revisions, and other changes without notice.

92 Exclusive Units

Todas las representaciones artísticas, bocetos, materiales gráficos, planos, especificaciones, características, dimensiones, amenidades, vistas existentes o futuras, y fotos representadas o descritas de alguna otra manera aquí son únicamente propuestas y conceptuales. Están basadas en planes preliminares de desarrollo, los cuales están sujetos a retiro, revisiones y otros cambios sin previo aviso.

All artist renderings, sketches, graphic materials, plans, specifications, features, dimensions, amenities, existing or future views, and photos depicted or otherwise described herein are proposed and conceptual only. They are based upon preliminary development plans, which are subject to withdrawal, revisions, and other changes without notice.



LOCK OFF (Double Rental Income)

Central units located on level 1 to 5, with ending numbers 2 & 3 (backside, balcony to the patio), and ending numbers 6 & 7 (front side, balcony to the street), offer 2 front doors to access the unit, dividing the flex room and ensuite bathroom from the rest of the unit, allowing an independent suite, having 2 rentals in the same unit, or allowing the unit owner to have a tenant or guest with an independent front door access to hallway.



The parking spaces & storage units will be for sale separately and with non discounted prices.

Todas las representaciones artísticas, bocetos, materiales gráficos, planos, especificaciones, características, dimensiones, amenidades, vistas existentes o futuras, y fotos representadas o descritas de alguna otra manera aquí son únicamente propuestas y conceptuales. Están basadas en planes preliminares de desarrollo, los cuales están sujetos a retiro, revisiones y otros cambios sin previo aviso.

All artist renderings, sketches, graphic materials, plans, specifications, features, dimensions, amenities, existing or future views, and photos depicted or otherwise described herein are proposed and conceptual only. They are based upon preliminary development plans, which are subject to withdrawal, revisions, and other changes without notice.





Features of the residences include:

- Kitchen: Counters & Countertops, Cabinets, Drawers.
- Closets will be included for each bedroom
- 2 Bedroom units will have 3 AC mini splits (1 for each bedroom and 1 for the living-dining kitchen).
- 1 Bedroom units will have 2 minisplits, (1 for the bedroom and 1 for the living-dining-kitchen).

No appliances will be included, fixture setups will be considered before delivery.

Floor Plans for units ending 2,3,6 and 7 will be located on the backside of the building overlooking the patio and the bay, 8 units per floor. 4th and 5th levels will have partial ocean views, corner tower units ending 1 will overlook the highway.

Todas las representaciones artísticas, bocetos, materiales gráficos, planos, especificaciones, características, dimensiones, amenidades, vistas existentes o futuras, y fotos representadas o descritas de alguna otra manera aquí son únicamente propuestas y conceptuales. Están basadas en planes preliminares de desarrollo, los cuales están sujetos a retiro, revisiones y otros cambios sin previo aviso.

All artist renderings, sketches, graphic materials, plans, specifications, features, dimensions, amenities, existing or future views, and photos depicted or otherwise described herein are proposed and conceptual only. They are based upon preliminary development plans, which are subject to withdrawal, revisions, and other changes without notice.





25
Minutes

LESS THAN 30 MINUTES
TO; AIRPORT, MARINAS,
SUPER-MARKETS. MALLS.



15
Minutes



5
Minutes

LESS THAN 10 MINUTES
TO MAIN HISTORIC &
TURISTIC ATTRACTIONS



5
Minutes



COHOUSING



Spend the years in a residential atmosphere among people alike.

Immerse yourself in the Zona Romantica
all together community,
everyone is welcome to Paradise.

YOUR HEART IS • HOME IS WHERE
YOU ARE



ROMANTIKA
LUXURY CONDOMINIUMS



LEISURE LIFESTYLE

A series of activities throughout the year.



WALKING DISTANCE TO EVERYTHING

ROMANTIKA

Everything you need, just a short stroll away.

ROMANTIKA'S location leads to every service available in the area within steps. Two Hospitals, a vibrant and diverse range for restaurants, 3 blocks from the bar area and 5 blocks from Los Muertos beach to enjoy sunny days and amazing sunsets throughout the year.

Every day facilities for you and your guests are also available on a walking distance, convenience stores and pharmacies, an every day open farmer's market and an endless list of local businesses to make your life easier.

A short drive to the south shore will take you to beautiful beaches, exciting hiking spots and breathtaking natural landscapes, make leisure in paradise your new lifestyle.

Todas las representaciones artísticas, bocetos, materiales gráficos, planos, especificaciones, características, dimensiones, amenidades, vistas existentes o futuras, y fotos representadas o descritas de alguna otra manera aquí son únicamente propuestas y conceptuales. Están basadas en planes preliminares de desarrollo, los cuales están sujetos a retiro, revisiones y otros cambios sin previo aviso.

All artist renderings, sketches, graphic materials, plans, specifications, features, dimensions, amenities, existing or future views, and photos depicted or otherwise described herein are proposed and conceptual only. They are based upon preliminary development plans, which are subject to withdrawal, revisions, and other changes without notice.



Common Areas and Amenities

- Lobby
- 24/7 Security
- Dog Park
- 2 Elevators
- Emergency Stairs
- Garbage chute
- Rooftop with Ocean Bay Views (Guadalupe Church & Gringo Gulch)
- Infinity Swimming Pool
 - Jacuzzi
 - Indoor Sky
 - Bar
 - BBQ
 - Sun Deck
 - Showers
 - Restrooms
 - Birds Fountain



GYM



Welcome to the beating heart of our new development, where fitness meets fulfillment, and every drop of sweat is a step towards a healthier, happier you.

LUXURY CONDOMINIUMS



NETWORKING



Commercial spaces to leverage potential business.

LUXURY CONDOMINIUMS

COWORKING

Settle in a friendly environment to work remotely.



The coworking space is like the beating heart of collaboration and productivity. It's where the hum of creativity mingles with the quiet tap of keyboards. Picture a vibrant, large windows let in the natural light, creating a workspace that's both energizing and focused. It's not just a place to work—it's a community hub where ideas flow as freely as the coffee.



Todas las representaciones artísticas, bocetos, materiales gráficos, planos, especificaciones, características, dimensiones, amenidades, vistas existentes o futuras, y fotos representadas o descritas de alguna otra manera aquí son únicamente propuestas y conceptuales. Están basadas en planes preliminares de desarrollo, los cuales están sujetos a retiro, revisiones y otros cambios sin previo aviso.

All artist renderings, sketches, graphic materials, plans, specifications, features, dimensions, amenities, existing or future views, and photos depicted or otherwise described herein are proposed and conceptual only. They are based upon preliminary development plans, which are subject to withdrawal, revisions, and other changes without notice.

Todas las representaciones artísticas, bocetos, materiales gráficos, planos, especificaciones, características, dimensiones, amenidades, vistas existentes o futuras, y fotos representadas o descritas de alguna otra manera aquí son únicamente propuestas y conceptuales. Están basadas en planes preliminares de desarrollo, los cuales están sujetos a retiro, revisiones y otros cambios sin previo aviso.

All artist renderings, sketches, graphic materials, plans, specifications, features, dimensions, amenities, existing or future views, and photos depicted or otherwise described herein are proposed and conceptual only. They are based upon preliminary development plans, which are subject to withdrawal, revisions, and other changes without notice.



ROOFTOP



A sprawling rooftop oasis, nestled atop the pinnacle of modernity. The air is crisp, and the city unfolds beneath you like a vibrant tapestry. The panoramic views, creating a seamless blend of urban sophistication and natural allure. Lounge in the chic of the terrace, create a haven above the hustle and bustle. As the sun sets, the rooftop transforms into a magical space, with ambient lighting casting a warm glow over the cityscape. It's not just a rooftop; it's a celestial retreat in the heart of the Romantic Zone.



CONDO MODELS

LUXURY CONDOMINIUMS

Todas las representaciones artísticas, bocetos, materiales gráficos, planos, especificaciones, características, dimensiones, amenidades, vistas existentes o futuras, y fotos representadas o descritas de alguna otra manera aquí son únicamente propuestas y conceptuales. Están basadas en planes preliminares de desarrollo, los cuales están sujetos a retiro, revisiones y otros cambios sin previo aviso.

All artist renderings, sketches, graphic materials, plans, specifications, features, dimensions, amenities, existing or future views, and photos depicted or otherwise described herein are proposed and conceptual only. They are based upon preliminary development plans, which are subject to withdrawal, revisions, and other changes without notice.

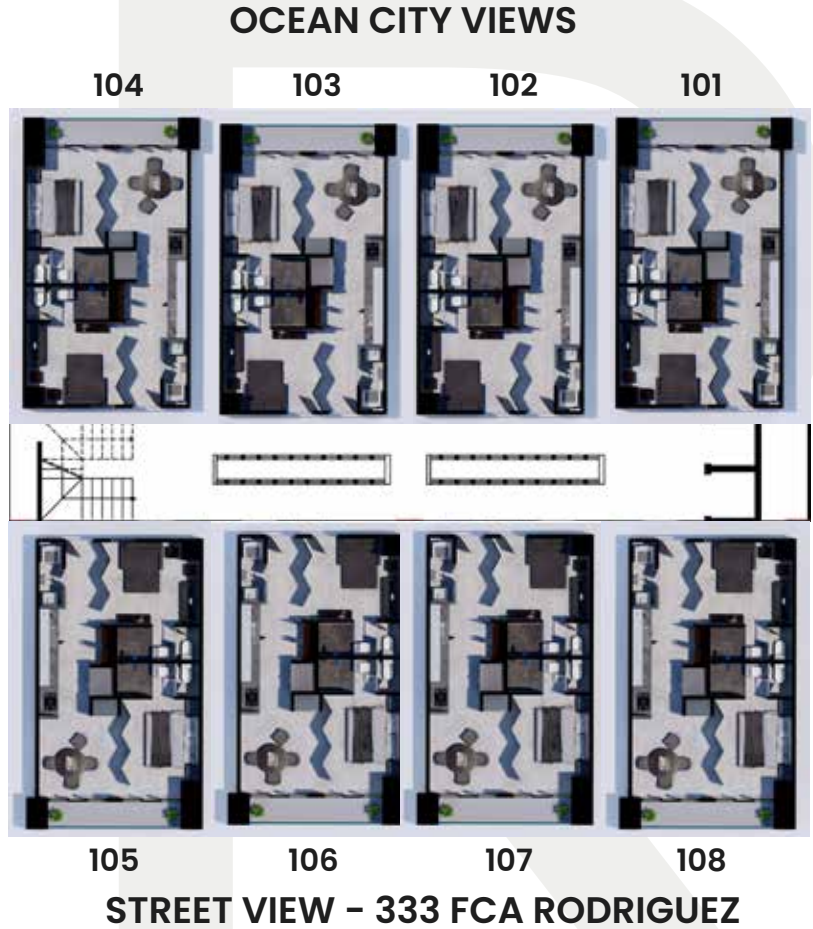
LEVELS 1 - 5

8 UNITS PER LEVEL

-  1 BEDROOM
-  2 FULL BATHROOMS
-  1 FLEX ROOM
(Murphy bed / Sofa bed)

ROMANTIKA

HOTEL

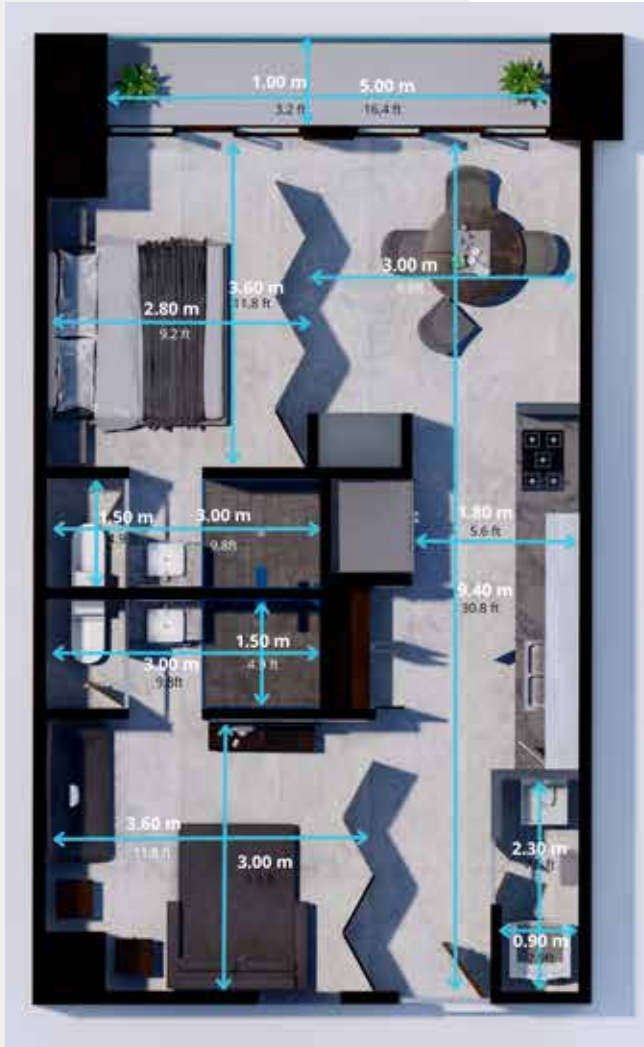


GAS STATION

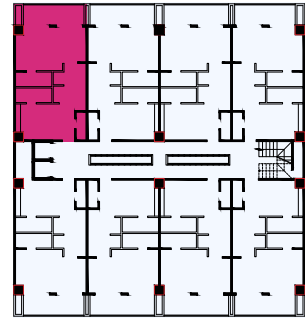
Todas las representaciones artísticas, bocetos, materiales gráficos, planos, especificaciones, características, dimensiones, amenidades, vistas existentes o futuras, y fotos representadas o descritas de alguna otra manera aquí son únicamente propuestas y conceptuales. Están basadas en planes preliminares de desarrollo, los cuales están sujetos a retiro, revisiones y otros cambios sin previo aviso.

All artist renderings, sketches, graphic materials, plans, specifications, features, dimensions, amenities, existing or future views, and photos depicted or otherwise described herein are proposed and conceptual only. They are based upon preliminary development plans, which are subject to withdrawal, revisions, and other changes without notice.

MEASUREMENTS



UNIT 104




Todas las representaciones artísticas, bocetos, materiales gráficos, planos, especificaciones, características, dimensiones, amenidades, vistas existentes o futuras, y fotos representadas o descritas de alguna otra manera aquí son únicamente propuestas y conceptuales. Están basadas en planes preliminares de desarrollo, los cuales están sujetos a retiro, revisiones y otros cambios sin previo aviso.

All artist renderings, sketches, graphic materials, plans, specifications, features, dimensions, amenities, existing or future views, and photos depicted or otherwise described herein are proposed and conceptual only. They are based upon preliminary development plans, which are subject to withdrawal, revisions, and other changes without notice.

LEVELS 6 - 12

6 UNITS PER LEVEL

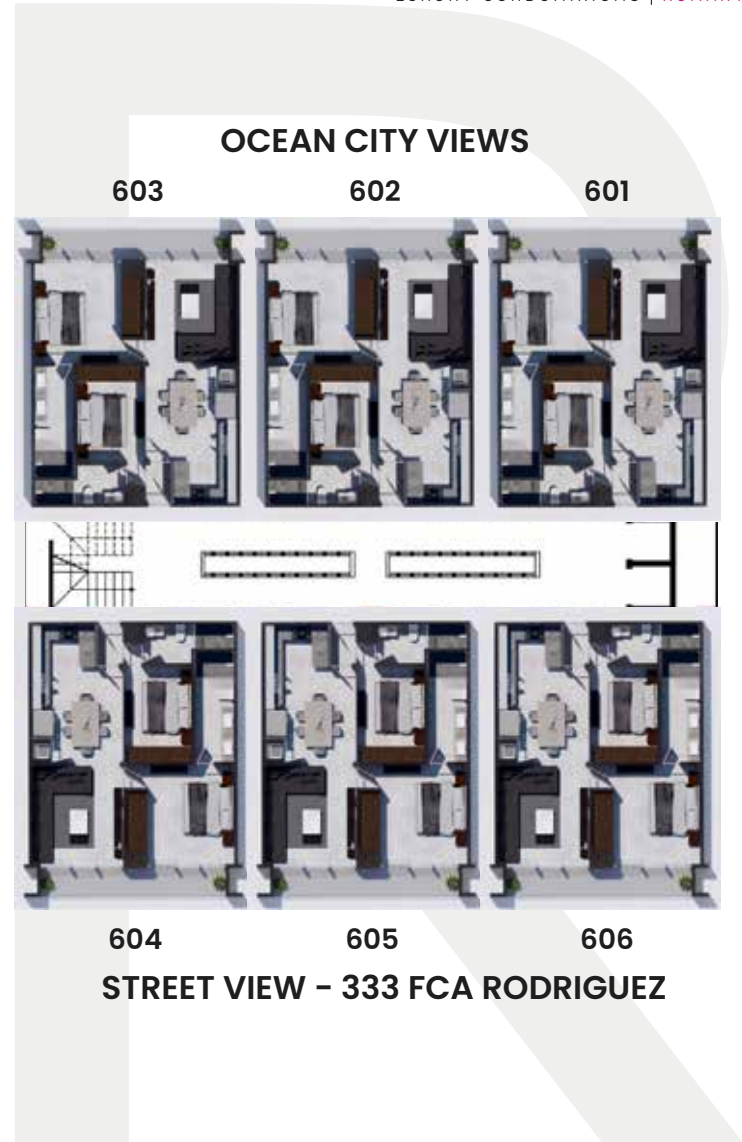
 2 BEDROOM

 2 FULL BATHROOMS

ROMANTIKA

Todas las representaciones artísticas, bocetos, materiales gráficos, planos, especificaciones, características, dimensiones, amenidades, vistas existentes o futuras, y fotos representadas o descritas de alguna otra manera aquí son únicamente propuestas y conceptuales. Están basadas en planes preliminares de desarrollo, los cuales están sujetos a retiro, revisiones y otros cambios sin previo aviso.

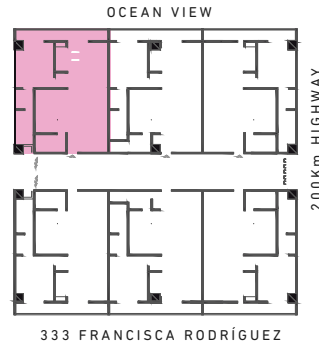
All artist renderings, sketches, graphic materials, plans, specifications, features, dimensions, amenities, existing or future views, and photos depicted or otherwise described herein are proposed and conceptual only. They are based upon preliminary development plans, which are subject to withdrawal, revisions, and other changes without notice.



MEASUREMENTS



UNIT 603



Todas las representaciones artísticas, bocetos, materiales gráficos, planos, especificaciones, características, dimensiones, amenidades, vistas existentes o futuras, y fotos representadas o descritas de alguna otra manera aquí son únicamente propuestas y conceptuales. Están basadas en planes preliminares de desarrollo, los cuales están sujetos a retiro, revisiones y otros cambios sin previo aviso.

All artist renderings, sketches, graphic materials, plans, specifications, features, dimensions, amenities, existing or future views, and photos depicted or otherwise described herein are proposed and conceptual only. They are based upon preliminary development plans, which are subject to withdrawal, revisions, and other changes without notice.

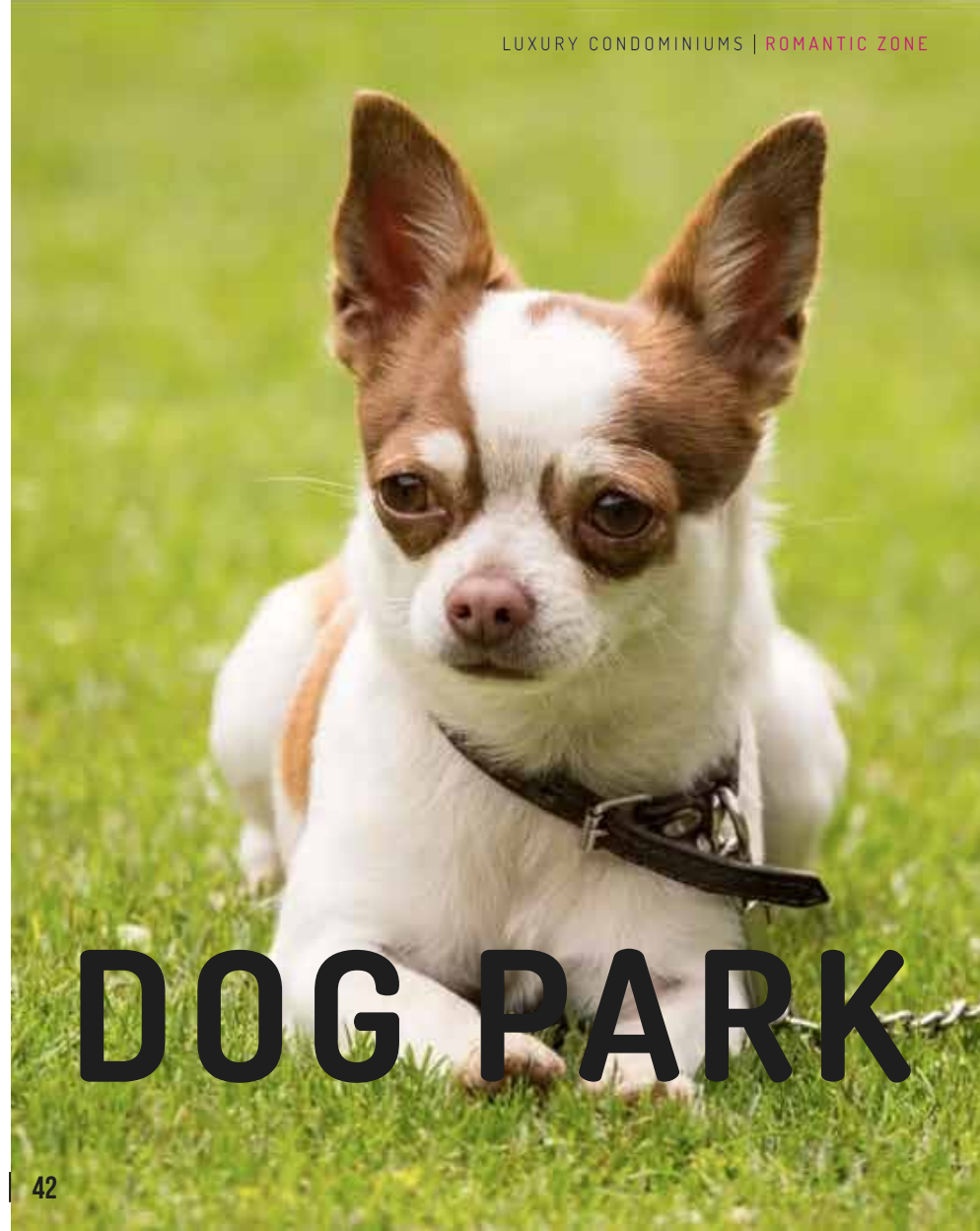
BACKSIDE FACADE

OCEAN VIEWS NORTH SHORE



Todas las representaciones artísticas, bocetos, materiales gráficos, planos, especificaciones, características, dimensiones, amenidades, vistas existentes o futuras, y fotos representadas o descritas de alguna otra manera aquí son únicamente propuestas y conceptuales. Están basadas en planes preliminares de desarrollo, los cuales están sujetos a retiro, revisiones y otros cambios sin previo aviso.

All artist renderings, sketches, graphic materials, plans, specifications, features, dimensions, amenities, existing or future views, and photos depicted or otherwise described herein are proposed and conceptual only. They are based upon preliminary development plans, which are subject to withdrawal, revisions, and other changes without notice.



DOG PARK

GROUND FLOOR

COMMERCIAL SPACES

High pedestrian traffic, only access for residents of SOHOPV luxury condominium across the road (this condominium has no commercial spaces), 124 units delivered to Americans and Canadians of NSE AB+, high exposure to vehicular traffic on Barra de Navidad km 200 and on Francisca Rodriguez

street at the corner of the Pemex gas station. And 92 apartments inside condominium Romantika.

ROMANTIKA

Todas las representaciones artísticas, bocetos, materiales gráficos, planos, especificaciones, características, dimensiones, amenidades, vistas existentes o futuras, y fotos representadas o descritas de alguna otra manera aquí son únicamente propuestas y conceptuales. Están basadas en planes preliminares de desarrollo, los cuales están sujetos a retiro, revisiones y otros cambios sin previo aviso.

All artist renderings, sketches, graphic materials, plans, specifications, features, dimensions, amenities, existing or future views, and photos depicted or otherwise described herein are proposed and conceptual only. They are based upon preliminary development plans, which are subject to withdrawal, revisions, and other changes without notice.

HOTEL



GAS STATION (HIGHWAY)

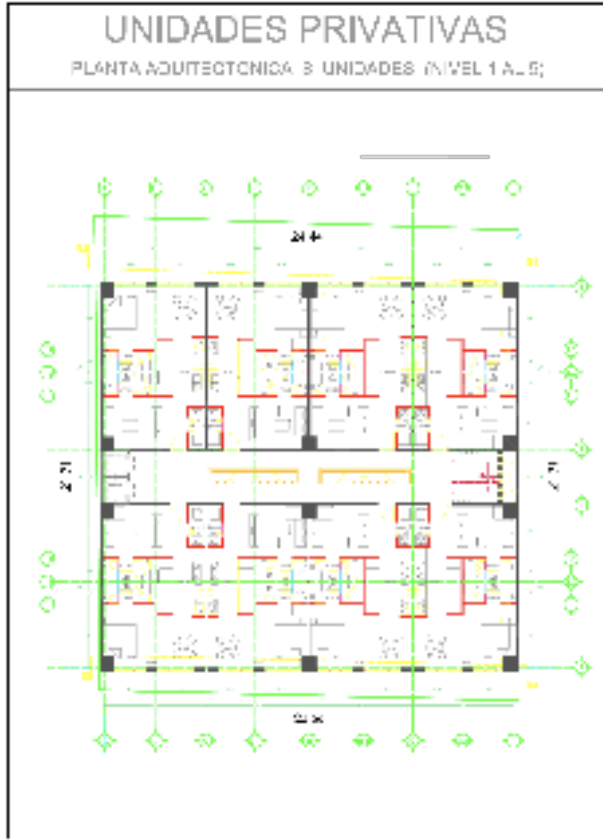
333 FRANCISCA RODRIGUEZ ST



Todas las representaciones artísticas, bocetos, materiales gráficos, planos, especificaciones, características, dimensiones, amenidades, vistas existentes o futuras, y fotos representadas o descritas de alguna otra manera aquí son únicamente propuestas y conceptuales. Están basadas en planes preliminares de desarrollo, los cuales están sujetos a retiro, revisiones y otros cambios sin previo aviso.
 All artist renderings, sketches, graphic materials, plans, specifications, features, dimensions, amenities, existing or future views, and photos depicted or otherwise described herein are proposed and conceptual only. They are based upon preliminary development plans, which are subject to withdrawal, revisions, and other changes without notice.

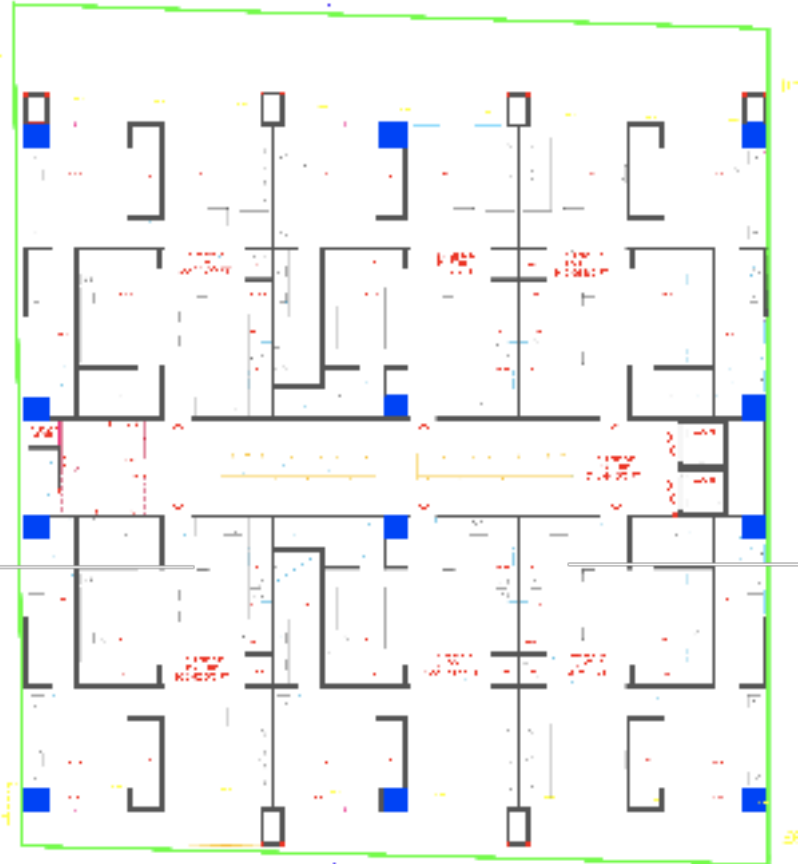
FLOOR PLANS LEVELS 1 TO 5

8 UNITS OF 1 BED · 2 BATH PER LEVEL



FLOOR PLANS LEVELS 6 TO 12

6 UNITS OF 2 BED · 2 BATH PER LEVEL

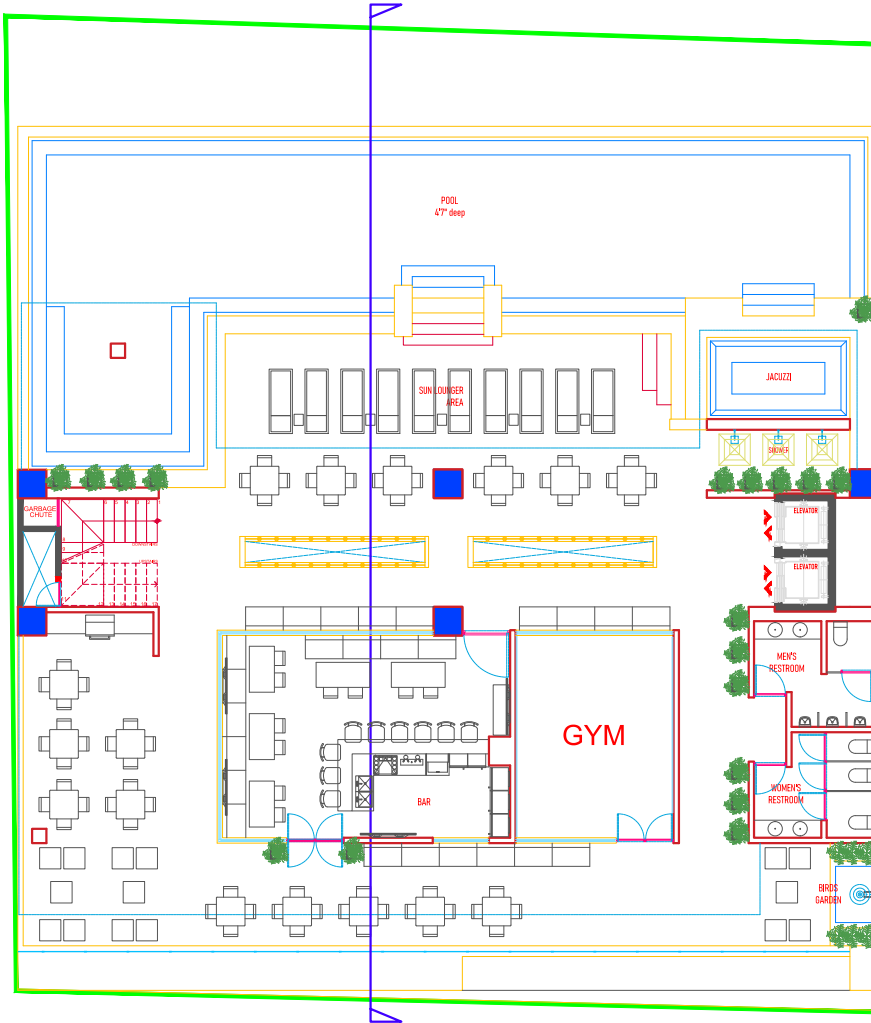


NIVEL 6 - 7 - 8 - 9 - 10 - 11 - 12

Todas las representaciones artísticas, bocetos, materiales gráficos, planos, especificaciones, características, dimensiones, amenidades, vistas existentes o futuras, y fotos representadas o descritas de alguna otra manera aquí son únicamente propuestas y conceptuales. Están basadas en planes preliminares de desarrollo, los cuales están sujetos a retiro, revisiones y otros cambios sin previo aviso.

All artist renderings, sketches, graphic materials, plans, specifications, features, dimensions, amenities, existing or future views, and photos depicted or otherwise described herein are proposed and conceptual only. They are based upon preliminary development plans, which are subject to withdrawal, revisions, and other changes without notice.

BLUEPRINT ROOFTOP



SUPERFICIE TOTAL - 587.25m² - 716.44 SQ FT

ROMANTIKA

Todas las representaciones artísticas, bocetos, materiales gráficos, planos, especificaciones, características, dimensiones, amenidades, vistas existentes o futuras, y fotos representadas o descritas de alguna otra manera aquí son únicamente propuestas y conceptuales. Están basadas en planes preliminares de desarrollo, los cuales están sujetos a retiro, revisiones y otros cambios sin previo aviso.

All artist renderings, sketches, graphic materials, plans, specifications, features, dimensions, amenities, existing or future views, and photos depicted or otherwise described herein are proposed and conceptual only. They are based upon preliminary development plans, which are subject to withdrawal, revisions, and other changes without notice.



EAST ROOFTOP MOUNTAIN VIEWS

Todas las vistas existentes o futuras, videos y fotos representadas o descritas de alguna otra manera aquí son únicamente propuestas y conceptuales. Están basadas en planes preliminares de desarrollo, los cuales están sujetos a retiro, revisiones y otros cambios sin previo aviso. All existing or future views, videos and photos depicted or otherwise described herein are proposed and conceptual only. They are based upon preliminary development plans, which are subject to withdrawal, revisions, and other changes without notice.

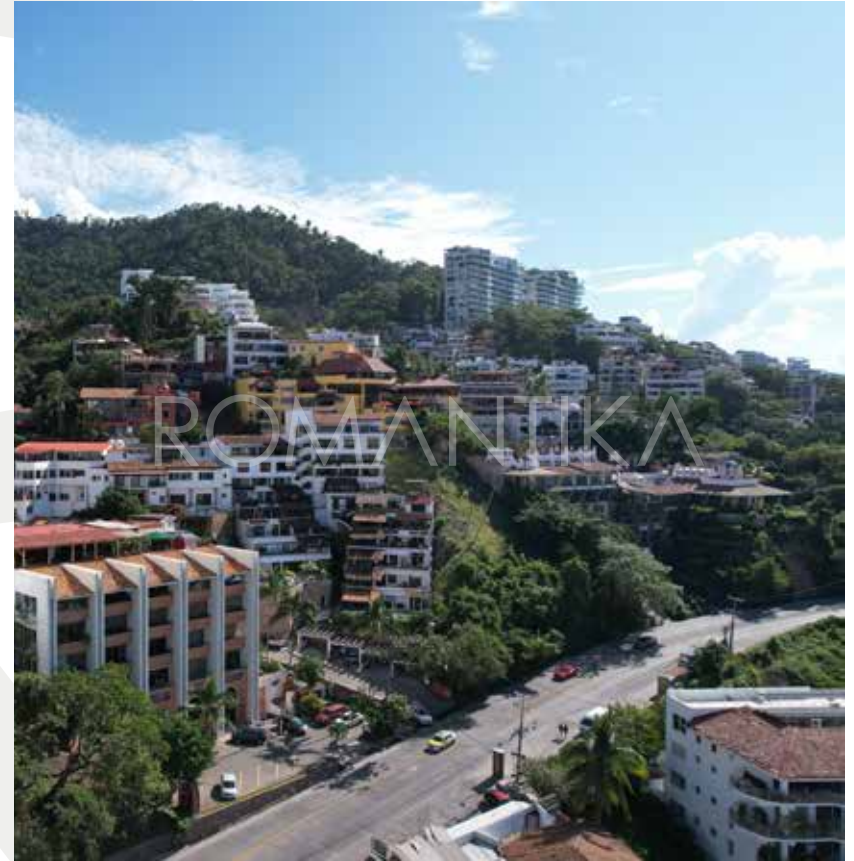
VIEWS ROOFTOP POOL NORTH OCEAN BAY CHURCH VIEWS





WEST OCEAN VIEWS ROOFTOOP

Todas las vistas existentes o futuras, videos y fotos representadas o descritas de alguna otra manera aquí son únicamente propuestas y conceptuales. Están basadas en planes preliminares de desarrollo, los cuales están sujetos a retiro, revisiones y otros cambios sin previo aviso. All existing or future views, videos and photos depicted or otherwise described herein are proposed and conceptual only. They are based upon preliminary development plans, which are subject to withdrawal, revisions, and other changes without notice.



STREET VIEW ROOFTOOP